

June 2013



LILAVATI HOSPITAL MEDICAL TIMES

Vol: 01 Issue: 01



Lilavati Hospital and Research Centre

More than Healthcare, Human Care



LILAVATI HOSPITAL MEDICAL TIMES

CONTENTS

EDITORIAL TEAM

Dr. Narendra D Trivedi
Prof. Dr. Sudhir V Dagaonkar
Dr. Sanjay Kapadia

CO-ORDINATOR

Mr. Kundan Singh

All the correspondence should be addressed to:
The Editor
Lilavati Hospital Medical Times
Lilavati Hospital and Research Centre
A-791, Bandra Reclamation, Bandra (W)
Mumbai: 400 050
Fax: 91-22-6407655
Website: www.lilavatihospital.com
Email: medicaltimes@lilavatihospital.com

➤ Editorial	1
➤ Overview: Lilavati Hospital & Research Centre	2
➤ Lilavati Hospital Today	4
• New MRI	
➤ Case Reports	7
• Resistant Hypertension by: Dr. Shahid Merchant	
• HRCT Chest & CT Guided Biopsy by: Dr. Manoj Deshmukh	
➤ Benevolence	10
➤ Educational Activities	11
➤ History of Modern Medicine	12
• William Osler	
• Quotes	
➤ Regulatory Information: Health Risk Management	13
➤ Latest Feathers in Cap	14
➤ Services	15
➤ Doctors associated with Lilavati Hospital	16

The views expressed in the times are not of Lilavati Hospital or the Editor or publisher. No part of the Lilavati Hospital Medical Times can be reproduced in any form including printing or electronic without the written permission of the editor or publisher.



Lilavati Hospital and Research Centre

More than Healthcare, Human Care

EDITORIAL...

CHANGING SCENARIO: HEALTHCARE IN INDIA

We are pleased to bring out the first issue of Lilavati Hospital Medical Times (LHMT). The medical times will offer relevant information on current developments in the institution, achievements, educational activity, regulatory developments as well as milestones of the history of medicine & motivational quotes.

LHMT will provide useful information on health care to doctors on the frontline, working at hospitals and clinics. The topics like continuing education, medical economics, social changes, administrative and environmental issues that affect stakeholders will be discussed by the experts.

The relationship between hospital and doctors, doctors and society, doctors and patient relationship as well as the environment in which the medical professionals undertake education, their training and their practice have all changed today. Characteristics that were once seen as hallmarks of medicine have evolved. Both, patients and society as a whole, have benefited from the resulting progress.

Medicine bridges the gap between science and society. The application of scientific knowledge to

human health is a crucial aspect of clinical practice. India's health system is undergoing rapid and fundamental changes. The entry of numerous health care providers and competition among hospitals and doctors are increasing. High quality care depends on both, effective health professionals and efficient management of organizations. To provide state of the art organizational infrastructure to support doctors in their pursuit of saving lives is a major responsibility of the leadership of a health institution. Corporate responsibility is often a neglected aspect, even at modern healthcare institutions fulfillment of this responsibility requires multiple commitments to the patient, to fellow professionals and to the health care institution to ensure that the system supports patients collectively.

Sudhir Dagaonkar

Prof. Dr. Sudhir V Dagaonkar



OVERVIEW: LILAVATI HOSPITAL & RESEARCH CENTRE



Late Shri Kirtilal Mehta

LILAVATI KIRTILAL MEHTA MEDICAL TRUST

Lilavati Hospital and Research Centre is run and managed by Public Charitable Trust - Lilavati Kirtilal Mehta Medical Trust which was formed in 1978. The Trust was started by late Shri Kirtilal Manilal Mehta. The Trust has been engaged in innumerable charitable endeavors across India.



Late Smt. Lilavati Mehta

NAME OF TRUSTEES

Shri Prabodh K Mehta	Shri Niket V Mehta
Shri Rashmi K Mehta	Shri Chetan P Mehta
Smt. Sushila V Mehta	Shri Bhavin R Mehta
Smt. Charu K Mehta	Shri Nanik Rupani
Smt. Rekha H Sheth	Shri S. Lakshminarayan
	Shri K. K Modi

LILAVATI HOSPITAL AND RESEARCH CENTRE

Late Shri Vijay Mehta had a wish to fulfill his parents wish to build world-class hospital where everyone in need for relief from disease and suffering come in with a certainty to receive the best possible medical care. His passion, attention to details and perseverance resulted in iconic healthcare landmark called Lilavati Hospital.

Lilavati Hospital & Research Centre is a premier multispeciality tertiary care hospital located in the heart of Mumbai, close to domestic & international airport. It encompasses modern health care facilities and state of art technology dedicatedly supported by

a committed staff. Lilavati Hospital has focused its operation on providing quality care with a human touch; which truly reflects the essence of our motto, "More than Health Care, Human Care". Being a centre of medical excellence where technology meets international norms & standard the hospital has got what it takes to be a pioneering quality health care institute and is one of the most sought after and patient friendly hospital.

Mission: To provide affordable healthcare of international standard with human care.

Motto: More than Healthcare, Human Care



OVERVIEW: LILAVATI HOSPITAL & RESEARCH CENTRE

HIGHLIGHTS

- 314 bedded hospital including 72 intensive care beds
- 12 state-of-the-art well equipped operation theatres
- Full fledged Dental & Dermo Cosmetology clinic
- Modern Cathlabs having specialized SICU & ICCU with highly trained cardiac care medical staff
- One of the highest nurses to patient ratio in India, which allows patient care in a more prudent manner
- Lilavati Kirtilal Mehta Medical trust is an approved research organization by Ministry of Science & Technology having all modern facilities necessary for conducting research
- More than 300 consultants and manpower of nearly 1,800.
- Hospital attends to around 300 In-patients and 1,500 Out-patients daily.

LATEST ADDITIONS

Lilavati Hospital has always striven to provide the best in health care to patients and is always in the front to adopt the latest technology available to its repertoire.

- *SOMATOM Definition Flash - CT SCAN: 1st of its kind in Western region*
- *3 Tesla MRI with latest Philips Ingenia having digital technology*

LILAVATI KIRTILAL MEHTA MEDICAL TRUST RESEARCH CENTRE

The Lilavati Kirtilal Mehta Medical Trust Research Centre is a Scientific and Industrial Research Organization approved by Ministry of Science and Technology (Govt. of India). The Research Centre under guidelines of Dept. of Science & Technology works in close collaboration in evaluating and developing technologies for better health care to the sick people. The research has undertaken multidisciplinary researches in the fields of Cardiology, Radiology, Cerebrovascular Diseases (Stroke), Ophthalmology, Chest Medicine, Nuclear Medicine, Pathology, Oncology, Orthopedics etc, to cite a few. One of the important aims of the Research Centre is to establish Community based epidemiological researches in Cerebrovascular disease in stroke. As a policy Drug and Device Trials are not undertaken at the Research Centre.



LILAVATI HOSPITAL TODAY

EQUIPMENT IN FOCUS - MRI

INTRODUCTION

Lilavati Hospital is now equipped with 3 Tesla MRI, the latest Philips Ingenia having digital technology. The 3 Tesla MRI improves image quality and is faster with latest softwares leading to increased diagnostic applications. Unique digital broadband MRI captures pure and increased signals with greater diagnostic accuracy. Extended ultra-large (upto 55cm) field of view gives extended coverage for whole body MRI. Wide bore (70cm) leads to less claustrophobia.

WHAT IS 3 TESLA MRI ?

Tesla is a strength of the magnets. There are various magnetic field strength available like 0.25T, 0.3T, 0.5T, 1.0T, 1.5 T and 3T. The image clarity depends on strength of magnet. Greater the strength of the magnet, better the image quality. Also some of the applications (like diffusion tensor imaging, fiber tractography, functional MRI) are better done on high field (strengths) MRIs.

PATIENT FRIENDLY

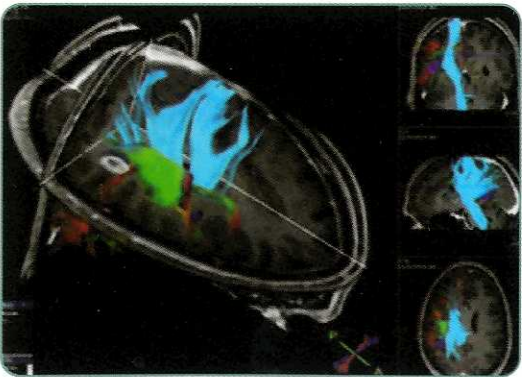
- 70 cm bore provides more space and helps to reduce anxiety
- Smart software to reduce retakes increase consistency and exam speed.
- Digital coil design greatly reduces coil weight.
- The ambient light ring on the magnet facade are adjustable, in-bore lighting enhance the openness of the system

- Patient-perceived gradient acoustic noise is reduced by more than 80%.

APPLICATIONS :

Neuro applications:

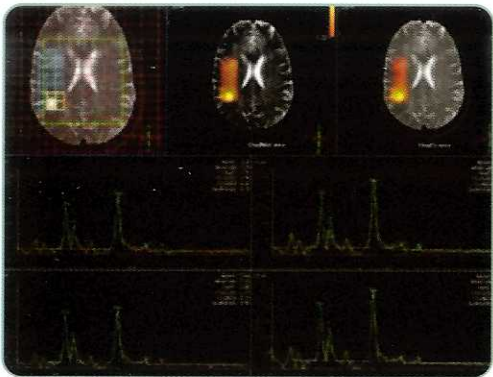
- Stroke -Diffusion and perfusion MR imaging for early detection of tissue at risk.
- Non contrast and contrast enhanced MR angiography for neck vessels and circle of willis.
- Venous bold: to detect tiny hemorrhage, various brain anomalies associated with small hemorrhages.
- Non contrast perfusion studies
- contrast perfusion and spectroscopy for tumor imaging
- Functional MRI
- CSF flow studies
- 3D Brain view



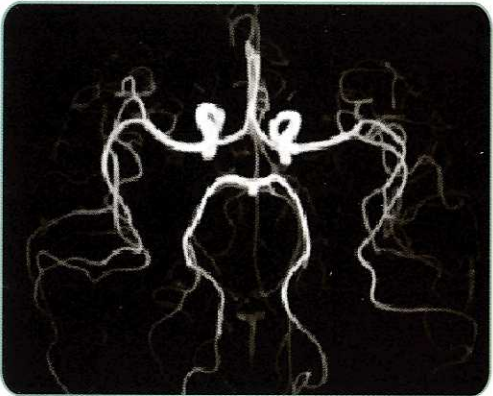
Fiber tractography



LILAVATI HOSPITAL TODAY



MR spectroscopy



Circle of willis

SPINE IMAGING

Whole spine screening, cervical spine, dorsal spine, lumbar spine, CV junction abnormalities. Stress MRI for better assessment of nerve root compression



CARDIAC APPLICATIONS

- Myocardial viability
- Congenital heart diseases
- Myocardial perfusion



BREAST IMAGING

- Breast MRI and spectroscopy
- Silicone only sequence to image the breast implants

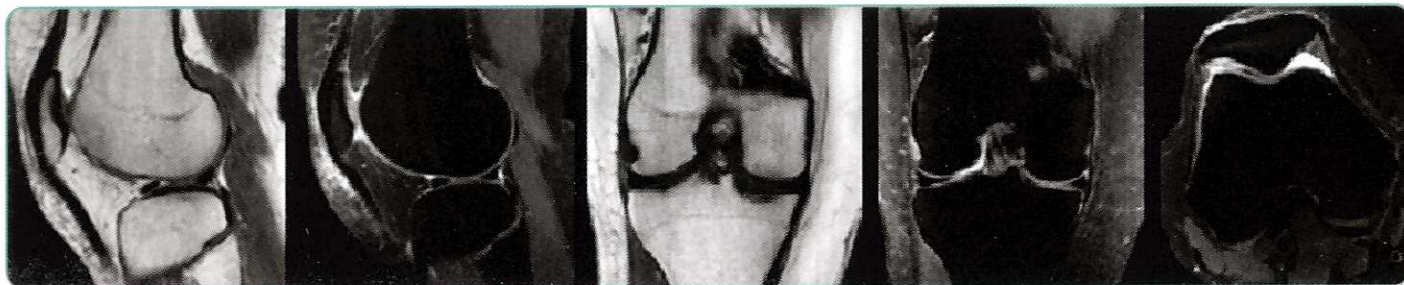




LILAVATI HOSPITAL TODAY

ORTHO IMAGING

- High resolution coil (knee, ankle, shoulder, wrist, hip, elbow, finger) giving high resolution of joints imaging
- Branchial plexus imaging



WHOLE BODY IMAGING

- Whole body diffusion for metastasis screening
- Gynaecological imaging whole body screening T2 images
- Liver, hepatobiliary and pancreatic imaging
- Renal MR imaging, MR Urography
- Prostate MR imaging with prostate spectroscopy



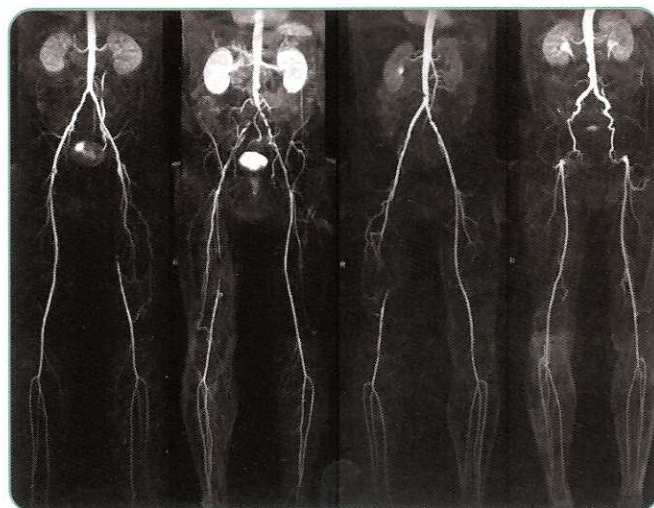
Whole body diffusion
for metastasis screening



Whole body MR
T2 screening

VASCULAR IMAGING

- Peripheral angiography
- Contrast and non-contrast aortogram and renal angiogram.
- Lower limb venogram, contrast and noncontrast.



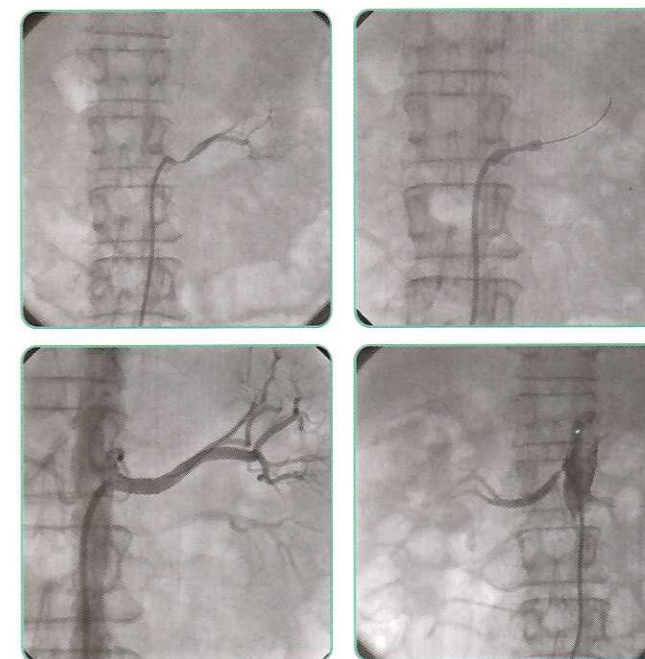
CASE REPORTS

RESISTANT HYPERTENSION

Dr. S. A. Merchant, DM, MD, DNB (Cardiology), FSCAI, (USA).

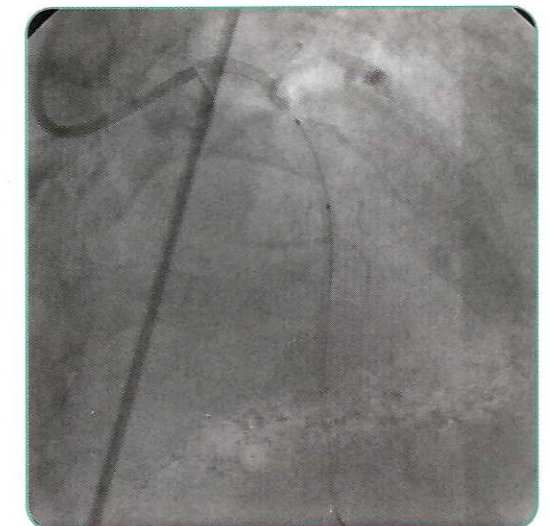
Resistant Hypertension, Coronary artery disease with Left ventricular failure and acute pulmonary edema, Bilateral Renal artery stenosis

- 62 years female patient with resistant hypertension poor control on BP medicines on five drugs combination therapy presented with accelerated hypertension, angina, heart failure, associated CAD, Diabetes, Dyslipidemia..
- Sr. Creatinine 2.1, O₂ Sat 92% on 10 litre oxygen mask, ECG| LBBB, Echo-Dilated LV, EF 35%, moderate MR.
- Angio - LAD 90% long stenosis in proximal segment, RCA Ostial CTO, bilateral critical 95% ostial renal artery stenosis.



Response after two days of Renal Stenting

- Blood pressure 120/70 mm/Hg on single drug metoprolol 25 mg OD
- O₂ sat 99% on room air
- Heart failure symptoms dramatically improved
- Sr. Creatinine down to 1.1mg/dl from 2.3 mg/dl



Comments:

1. A persistent high BP on 24 hours ambulatory home BP not responding to multiple combination drug therapy.
2. Secondary causes of resistant hypertension are renal artery stenosis, pheochromocytoma, coarctation of aorta, renal parenchymal disease, thyroid dysfunction, aldosteronism, cushings syndrome, obstructive sleep apnea syndrome to be ruled out.
3. In this case resistant hypertension not responding to multiple drug therapy was



CASE REPORTS

associated with heart failure and high Sr. Creatinine. Bilateral artery stenting gave excellent response in controlling hypertension, heart failure and azotaemia.

HRCT CHEST & CT GUIDED BIOPSY

AN IMPORTANT PROBLEM SOLVING TOOL FOR A COMPLEX CASE OF TRIPLE VESSEL CORONARY ARTERY DISEASE, WITH INTERSTITIAL LUNG DISEASE AND ACTIVE TUBERCULOSIS

Dr. Manoj Deshmukh,
M.B.B.S, M.D (Radiodiagnosis)

A 70 year old diabetic and hypertensive male patient complained of pain on the left side of his chest and dyspnoea on exertion with gradual progressive increase in the severity of his symptoms. Patient also had cough with whitish expectorate since three to four months.

Patient is an ex-smoker, having left smoking 15 years back. Patient had a history of coronary angioplasty in 2007.

Patient was admitted to LHRC in view of his chest pain and breathlessness and a catheter coronary angiography was performed which suggested triple vessel disease. Patient planned for coronary bypass surgery. Routine hematologic work up was done and was unremarkable

A pre-operative **chest radiograph** revealed fine reticular opacities suggestive of an interstitial lung disease with suspicious consolidation in the left lower zone.

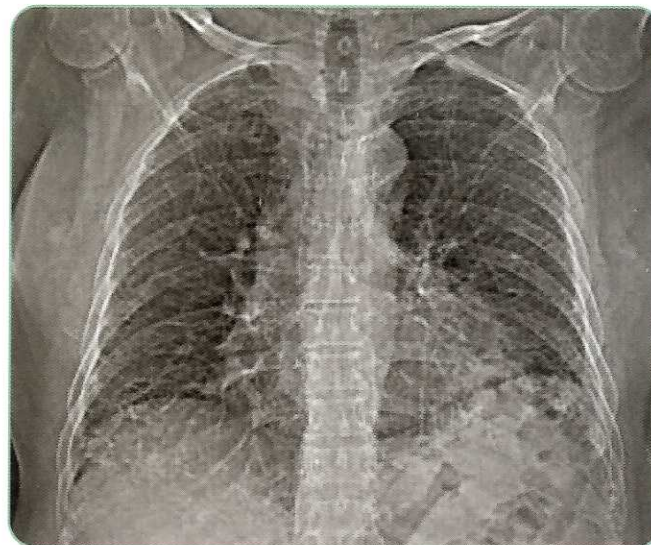


Fig1: Chest Radiograph showing interstitial lung pattern with suspicious consolidation in left lower zone

HRCT chest done revealed a thick walled cavity of approximately 3.7 x 2.7 cm in the posterior and lateral basal segments of left lower lobe with the wall thickness measuring approximately 6 mm (yellow arrow). There were changes of interstitial lung disease with honeycombing representing UIP (red arrow). Depending on the imaging morphology, possibility of pulmonary tuberculosis or cavitating neoplasm were considered and a decision to do a CT guided biopsy was taken after discussion with the referring physician.



CASE REPORTS

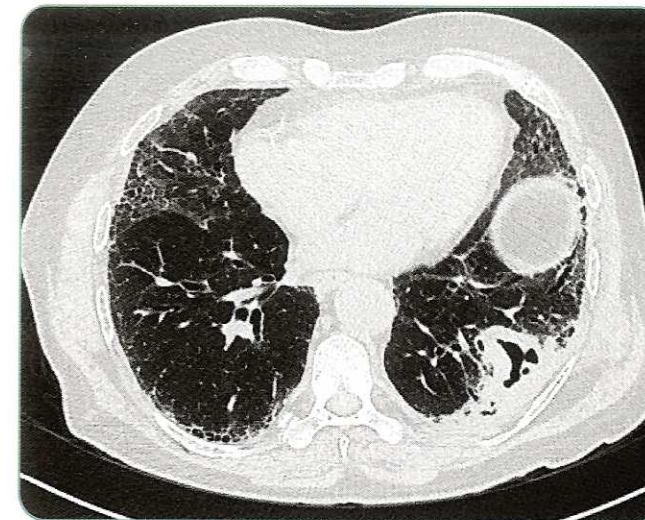


Fig 2 : Plain CT Chest : thick walled cavitary lesion in left lower lobe with mild bilateral subpleural honeycombing and fibrosis.

CT guided biopsy was performed under all aseptic precautions, and local anaesthesia through intercostal route using 18 G coaxial tru-cut biopsy system. Multiple (4) 2 cm long tissue cores were obtained from the thick wall of the cavity and the adjoining parenchyma. The procedure was uneventful and the patient tolerated the procedure well. The post procedure

CT did not reveal any pneumothorax or chest wall collection.

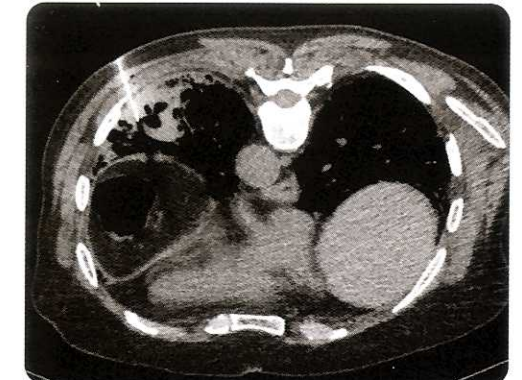


Fig 3 : CT guided biopsy from the wall of the cavitary lesion in prone position.

The **histopathology** revealed typical caseating granulomas with giant and epithelioid cells and acid fast bacilli representing tuberculosis.

In view of active tuberculosis and interstitial lung disease, the decision for the coronary bypass surgery was deferred to a later date subjective to his clinical status on a three month follow up of anti tuberculous therapy.

Conclusion: HRCT chest & CT guided biopsy serve as an important problem solving tool / modality, in complex clinical cases for accurate diagnosis and appropriate management of the patients.



BENEVOLENCE

The social service wing of the hospital- SEWA serves to the health requirements of needy people. This department seeks to bridge the gap between the needy patients and the fast evolving medical technology. Various social activities such as free OPD, services to senior citizen, sending mobile vans to Adivasi areas to

organize free health check-up camps, free camps are undertaken as an on-going process. The Roshni Eye Bank managed by Lilavati hospital is a well-equipped comprehensive centre for cornea removal, processing, storing, supplying and corneal transplantation.

Free OPD



Petit School Camp, 2012



Bandra Police Station Camp, 2011



Dharavi Camp, 2010



EDUCATIONAL ACTIVITIES

LHRC Doctors share their intellectual capital and expertise with others through CMEs using means like workshops, seminars, conferences, live telecast of procedures and surgeries, which they are performing.

LHRC has been accredited by Maharashtra Medical Council for conducting CMEs.

Sr. No.	CME - Topic	Date Organized on
1	Radiological updates	6-Jan, 2012
2	Neonatology	22-Jan, 2012
3	Pediatric Hematology	19-Feb, 2012
4	Pediatric Neurology	29-Feb, 2012
5	Organ Donation and kidney transplantation	3-Mar, 2012
6	Pediatrics Pulmonology	25-Mar, 2012
7	Pediatrics Neurology	29-Apr, 2012
8	Monsoon Ailments	6-Jun, 2012
9	Pediatric Nephrology	17-Jun, 2012
10	Respiratory Updates	20-Jun, 2012
11	Pediatric Surgery	29-Jul, 2012
12	Infectious Disease update	8-Aug, 2012
13	Pediatric Immunology & Rheumatology	30-Sept, 2012
14	Interventional and Diagnostic Nephrology	26 & 27 Jan, 2013
15	You can count on the Platelet Count	27-Feb, 2013
16	New Horizons in Hernia	3-Apr, 2013
17	Updates on Obstructive Sleep Apnea & Sleep Disorders	10-Apr, 2013
18	Problems and Solutions - Obstetrics and Gynecology	24-April, 2013



International Pediatric Urology Update, 2010



CME on Endoscopy, 2011



Global Update on Pain, 2012



Infectious Disease Update, 2012



HISTORY OF MODERN MEDICINE

Father of Modern Medicine Sir William Osler, 1st Baronet



(12th July, 1849-29th Dec, 1919)

He was a Canadian physician. He was one of the "Big Four" founding professors at Johns Hopkins Hospital as the first professor of Medicine and founder of the Medical Service there

(The "Big Four" were William Osler, Professor of Medicine; William Stewart Halsted, Professor of Surgery, Howard A. Kelly, Professor of Gynecology; and William H. Welch, Professor of Pathology).

Osler created the first residency program for specialty training of physicians and he was the first to bring medical students out of the lectures hall for bedside clinical training.

He has been called the "Father of Modern Medicine". Osler was a multifaceted physician and individual, functioning as a pathologist, internist, educator, bibliophile, historian, author and renowned practical joker

WILLIAM OSLER QUOTES

- *The very first step towards success in any occupation is to become interested in it*
- *The young physician starts life with 20 drugs for each disease, and the old physician ends life with one drug for 20 diseases*
- *There are, in truth, no specialties in medicine, since to know fully many of the most important diseases a man must be familiar with their manifestations in many organs.*
- *We are here to add what we can do to life, not to get what we can from life.*



REGULATORY INFORMATION

HEALTH RISK MANAGEMENT

Definition: Health Risk Management

In any industry, risk management addresses liability, both proactively and reactively. Risk management in health care considers patient safety, quality assurance and patients' rights. The potential for risk permeates all aspects of health care, including medical mistakes, electronic record keeping, provider organizations and facility management.

Health Risk Management

Management is vital for ensuring long-term success of any industry. Health care deals with life and death situations, leading to astronomical risk factors. Health care risk management helps doctors and nurses better limit the risks associated with their jobs.

Function

Health care risk management serves to protect patients by reducing medical errors, ensuring the competency of medical professionals, staying up-to-date with state and federal medical regulations and managing pharmaceutical data. Risk management in health care also ensures the protection of an organization and its workforce by eliminating hazards through safety management trainings.

Features

To keep patients safe, health care entities perform quality assurance audits and monitoring activities to see to it that patients are receiving optimal care, and

that medical equipment is in safe operating order. Patient areas are checked for things such as cleanliness, sterilization and the proper disposal of sharp objects and needles. Identified risks are reported, and efforts are made by the organization to eliminate hazards.

Significance

It is a serious concern when patients are exposed to risk management issues and can sometimes be a matter of life and death. The Institute of Medicine of the National Academy of Science concluded that approximately 98,000 patients suffer accidental deaths in hospitals each year due to medical errors.

Health Care Risk Management Policy

A health care risk management policy is a set of rules and procedures that a medical organization such as a hospital, clinic or research lab, puts into place to prevent medical accidents and other operational incidents



LATEST FEATHERS IN CAP...

Efforts and hard work put in by team Lilavati Hospital has resulted in various awards and accolades:



Hospital has been recognized as "India's best Multi Specialty Hospital in Metro" by ICICI Lombard and CNBC TV 18. The award was presented by Mr. Montek Singh Ahluwalia (Deputy Chairman - Planning Commission, Govt. of India) in 'India Healthcare Awards 2012' ceremony held at New Delhi.



- Hospital is an official **ESMO (European Society for Medical Oncology) Asia CME Partner Centre** in Colorectal Cancer program in India.
- **Quality Council of India (QCI) has accredited LILAVATI HOSPITAL & RESEARCH CENTRE with NABH in February 2011.**



In order to ensure that entire system is process driven and not person / individual driven; we decided to get Lilavati Hospital NABH (National Accreditation Board for Hospitals and Healthcare Providers) Accredited.

NABH is need of the hour. It broadly focuses on Structure, Processes and Outcomes. NABH accreditation helps in enhancing Patient Satisfaction, Employee Satisfaction and Operational Efficiency by: ensuring ownership of clinical and non-clinical functions at all levels by suitably qualified and experienced professionals, ensuring that employees follow laid down policies and procedures and by monitoring key indicators for continual improvement.



SERVICES

MEDICAL

Anesthesiology
Audiology and Speech therapy
Cardiology
Chest Medicine
Chronic Pain management
Dental
Dermo Cosmetology
Diabetology & Endocrinology
Gastroenterology
Haematology
Hair Transplant
Internal Medicine
Infectious diseases
Nephrology
Neurology
Head and Migraine Clinic
Psychiatry / Psychology / Neuropsychology
Medicine Oncology
Pediatrics
Rheumatology
Sleep Medicine

LABORATORY SERVICES

Pathology
Microbiology
Histopathology
Blood Bank

CRITICAL CARE

Intensive Care Unit (ICU)
Intensive Cardiac Unit (ICCU)
Surgical Intensive Care Unit (SICU)
Paediatric Intensive Care Unit (PICU)
Neo-Natal Intensive Care Unit (NICU)
Paralysis & Stroke Unit

SURGICAL

Bariatric Surgery
Cardiothoracic Surgery
Colorectal Surgery
ENT and Head & Neck Surgery
Gastro Intestinal Surgery
General Surgery
Gynecology , Obstetrics & IVF
Transplant: Corneal & Kidney
Minimal Invasive Surgery (Laposcopic Surgery)
Neuro Surgery
Spine Surgery
Onco Surgery
Ophthalmology
Orthopedics, Sports Medicine
Pediatric Surgery
Plastic & Reconstruction Surgery
Urology, Andrology
Vascular Surgery

24 HRS SERVICES

Ambulance
Emergency
Pharmacy

DIAGNOSTICS

Imaging Services
CT
MRI
X-ray
BMD
OPG
Sonography (USG)
Mammography
Nuclear Medicine
Interventional Radiology



Andrologist

Dr. Shah Rupin S.

Anaesthesiologist

Dr. Mascarenhas Oswald
Dr. Merchant Ami
Dr. Budhakar Shashank
Dr. Gandhi Nisha
Dr. Gaiwal Sucheta
Dr. Gawankar Prakash
Dr. Kharwadkar Madhuri
Dr. Kulkarni Satish K.
Dr. Mahajan Anjula
Dr. Khatri Bhimsen
Dr. Shah Falguni

Audiology & Speech Therapists

Dr. Bhan Satyan
Dr. Gorawara Pooja
Dr. Parulkar Bakul
Dr. Patadia Rajesh

Cardiovascular Surgeons

Dr. Bhattacharya S.
Dr. Jaiswal O. H.
Dr. Kaushal Pandey
Dr. Kumar Pavan
Dr. Rachmale G. N.
Dr. Nand Kumar
Dr. Mehra Arun P.
Dr. Shetty Mohan
Dr. Joshi Suresh
Dr. Honnekeri Sandeep T.
Dr. Hamdulay Z.

Cardiologists

Dr. Ballani Prakash H.
Dr. Bang Vijay
Dr. Dargad Ramesh R.
Dr. Gokhale Nitin S.
Dr. Hemant Kumar
Dr. Jhala Darshan
Dr. Kothari Snehal N.
Dr. Lokhandwala Yash
Dr. Mehan Vivek
Dr. Mehta Ashwin B.
Dr. Merchant S. A.
Dr. Menon Ajit R.
Dr. Nabar Ashish
Dr. Punjabi Ashok H.
Dr. Samuel K. Mathew
Dr. Sanzgiri P. S.
Dr. Shah Chetan
Dr. Sharma Anil K.

Dr. Suratkal Vidya

Dr. Vijan Suresh
Dr. Vyas Pradeep R.
Dr. Vora Amit
Dr. Shah Jignesh
Dr. Vaishnav Sudhir
Dr. Mehta Haresh G.

Chest Medicine

Dr. Mehta Sanjeev K.
Dr. Prabhudesai P. P.
Dr. Parkar Jalil D.
Dr. Rang Suresh V.
Dr. Chhajed Prashant

Colorectal Surgery

Dr. Chulani H. L.

Pain Management

Dr. Baheti Dwarkadas
Dr. Jain Jitendra

Dentistry / Dental Surgeons

Dr. Bhavsar Jaydeep P.
Dr. Deshpande Dilip
Dr. Gala Dhimant
Dr. Joshi P. D.
Dr. Khatavkar Arun
Dr. Kamdar Rajesh J.
Dr. Parulkar B. P.
Dr. Parulkar Darshan

Department of Imaging

Dr. Bajaj Aneeta
Dr. Deshmukh Manoj
Dr. Merchant Harsh
Dr. Kulkarni Makrand
Dr. Mehta Mona
Dr. Ingule Amol
Dr. Chauhan Sonal
Dr. Chatterjee Parangama

Dermatologists

Dr. Goyal Nilesh
Dr. Oberai Chetan
Dr. Mehta Nimesh
Dr. Parasramani S. G.

Diabetologists

Dr. Joshi Shashank R.
Dr. Panikar Vijay

Ent Surgeons

Dr. D'souza Chris E.
Dr. Kapadia Sanjay P.
Dr. Pusalkar A.
Dr. Parasram Kamal S.

Gastro Surgeons

Dr. Bharucha Manoj
Dr. Kulkarni D. R.
Dr. Mehta Hitesh
Dr. Varty Paresch
Dr. Wagle Prasad K.
Dr. Zaveri Jayesh P.

Gastroenterologists

Dr. Barve Jayant S.
Dr. Gupta Ravi
Dr. Kanakia Raju R.
Dr. Khanna Sanjeev
Dr. Phadke Aniruddha Y.
Dr. Parikh Samir S.
Dr. Shah Saumil K.

General Surgeons

Dr. Garud T. V.
Dr. Mehta Narendra
Dr. Shastri Satyanand B.
Dr. Shetty Sadanand V.
Dr. Trivedi Narendra

Gynaecologist

Dr. Agarwal Rekha
Dr. Coelho Kiran S.
Dr. Dhanu Ranjana V.
Dr. Dhanu Vilas R.
Dr. Nanavati Murari S.
Dr. Pai Rishma D.
Dr. Palshetkar Nandita
Dr. Pai Hrishikesh
Dr. Shah Cherry C.
Dr. Goyal Swarna

Haematology Clinical

Dr. Agarwal M. B.
Dr. Bhave Abhay

Headache & Migraine Clinic

Dr. Ravishankar K.

Infectious Diseases Consultant

Dr. Nagvekar Vasant C.

Intensivist

Dr. Vas Conrad Rui
Dr. Ansari Abdul
Dr. Jiandani Prakash

Interventional Radiologists

Dr. Sheth Rahul
Dr. Warawdekar Gireesh
Dr. Limaye Uday S.

Joint Replacement Surgeons

Dr. Maniar Rajesh N.

Nephrologists

Dr. Mehta Hemant J.
Dr. Shah Arun
Dr. Suratkal L. H.
Dr. Upadhyaya Kirti L.

Neurologists

Dr. Chauhan Vinay
Dr. Sirsat Ashok M.
Dr. D'souza Cheryl
Dr. Dalal P. M.
Dr. Vyas Ajay

Neuropsychologist

Dr. Panjwani Siddika

Neuro Surgeons

Dr. Ramani P. S.
Dr. Goel Atul
Dr. Dange Nitin
Dr. Shah Rajan

Nuclear Medicine

Dr. Lele R. D.
Dr. Luthra Karuna

Oncologists

Dr. R. Gopal
Dr. Smruti B. K.
Dr. Pendharkar Dinesh

Oncosurgeons

Dr. Deshpande Ramakant K.
Dr. Jagannath P.
Dr. Parikh Deepak
Dr. Sharma Sanjay
Dr. Shah Rajiv C.

Opthamology

Dr. Agrwal Vinay
Dr. D'souza Ryan

Dr. Mehta Salil
Dr. Nadkarni Shivram
Dr. Nagvekar Sandip S.
Dr. Shah Manish
Dr. Vaidya Ashish R.
Dr. Mehta Himanshu

Orthopaedic Surgeons

Dr. Agarwal Vinod
Dr. Archik Shreedhar
Dr. Chaddha Ram
Dr. D'silva Domnic F
Dr. Desai Sanjay S.
Dr. Deshmukh Niranjana
Dr. Garude Sanjay
Dr. Joshi Anant
Dr. Mukhi Shyam R.
Dr. Nadkarni Dilip
Dr. Padgaonkar Milind
Dr. Panjwani Jawahar S.
Dr. Vengsarkar Nirad S.
Dr. Vatchha Sharookh P.
Dr. Warriar Sudhir
Dr. Thakkar C. J.
Dr. Kohli Amit

Pathologists

Dr. Chavan Nitin M.
Dr. Dhunjibhoy Ketayun R.
Dr. Rangwalla Fatema
Dr. Hastak Meenal
Dr. Mehta Kashvi
Dr. Saraswat Shubhangi
Dr. Tampi Chandralekh

Paediatric Surgeons

Dr. Johari Ashok (Ortho)
Dr. Karmarkar Santosh J.

Dr. Redkar Rajeev G.

Paediatricians

Dr. Ali Uma
Dr. Avasthi Bhupendra
Dr. Chittal Ravindra
Dr. Gupta Priyam
Dr. Kanakia Swati R.
Dr. Lokeshwar M. R.
Dr. Mehta Kamini
Dr. Shah Krishnakumar N.
Dr. Sharma Shobha
Dr. Ugra Deepak

Paediatric Neurologist

Dr. Shah K. N.

Physicians / Internal Medicine

Dr. Ballani A. G.
Dr. Bandukwala S. M.
Dr. Nair C. C.
Dr. Dalvi Sunil G.
Dr. Jadwani J. P.
Dr. Gidwani Vinod N.
Dr. Medhekar Tushar P.
Dr. Shimpi Shrikant

Plastic Surgeons

Dr. Kumta Samir
Dr. Pandya Narendra
Dr. Purohit Shrirang

Psychiatrist

Dr. Deshmukh D. K.
Dr. Shah Bharat R.
Dr. Vahia Vihang N.

Psychologist

Dr. Chulani Varkha

Physician / Rheumatologist

Dr. Sangha Milan
Dr. Kalke Shubhada

Physiotherapist

Dr. Garude Heena

Spine Surgeon

Dr. Bhojraj Shekhar
Dr. Mohite Sheetal

Urologists

Dr. Desai Samir M.
Dr. Pathak Hemant R.
Dr. Raina Shailesh
Dr. Sanghvi Nayan
Dr. Shah Sharad R.
Dr. Vaze Ajit M.
Dr. Raja Dilip

Urological Laparoscopic Surgeon

Dr. Ramani Anup

Vascular Surgeons

Dr. Patel Pankaj
Dr. Pai Paresch



IMPORTANT TELEPHONE NUMBERS

Emergency / Casualty :	2656 8063 / 2656 8064
Ambulance :	9819778700
Hospital Board Line :	2675 1000 / 2656 8000
Hospital Fax :	2640 7655 / 2640 5119
Admission Department :	2656 8080 / 2656 8081 / 2656 8082
TPA Cell :	2656 8089
Appointment-OPD :	2656 8050 / 2656 8051
Billing-Inpatient Department :	2675 1585 / 2675 1586
Billing-OPD Department :	2656 8052 / 2656 8053
Blood Bank Department :	26568 214 / 2656 8215
Health Check-up Department :	2656 8354/2656 8355
Report Dispatch Counter :	2656 1620
MRI Department :	2656 8066
X-Ray, Sonography Department :	2656 8031
CT Scan Department :	2656 8044



Lilavati Hospital and Research Centre

More than Healthcare, Human Care

Lilavati Hospital & Research Centre

A-791, Bandra Reclamation, Bandra (W), Mumbai - 400 050

Tel.: +9122-2675 1000

Website: www.lilavatihospital.com